

## Quick Load Pump Head

### EasyPump Series

(Pressure Adjustable)



(Fixed Pressure)



(4 rollers)



### Product Introduction

- | The unique tube clamp linkage mechanism, with the opening process of the upper pressure block, the tube clamp automatically lifts, the user can easily install the tube. As the upper pressure block is closed, the tube clamp is automatically reset to fix the tube. At the same time, "the Trigger lever assist mechanism" assists the user in pressing the upper pressure block.
- | The rubbing wheel mechanism can adjust the position of the lower tube clamp to fix different materials and diameters tube.
- | Users can choose single or dual-channel pump heads. You can also choose a pump head with a fixed or adjustable tube pressure gap according to your requirements. The shell material of the pump head including two types: resistant to organic solvents and intolerant to organic solvents.

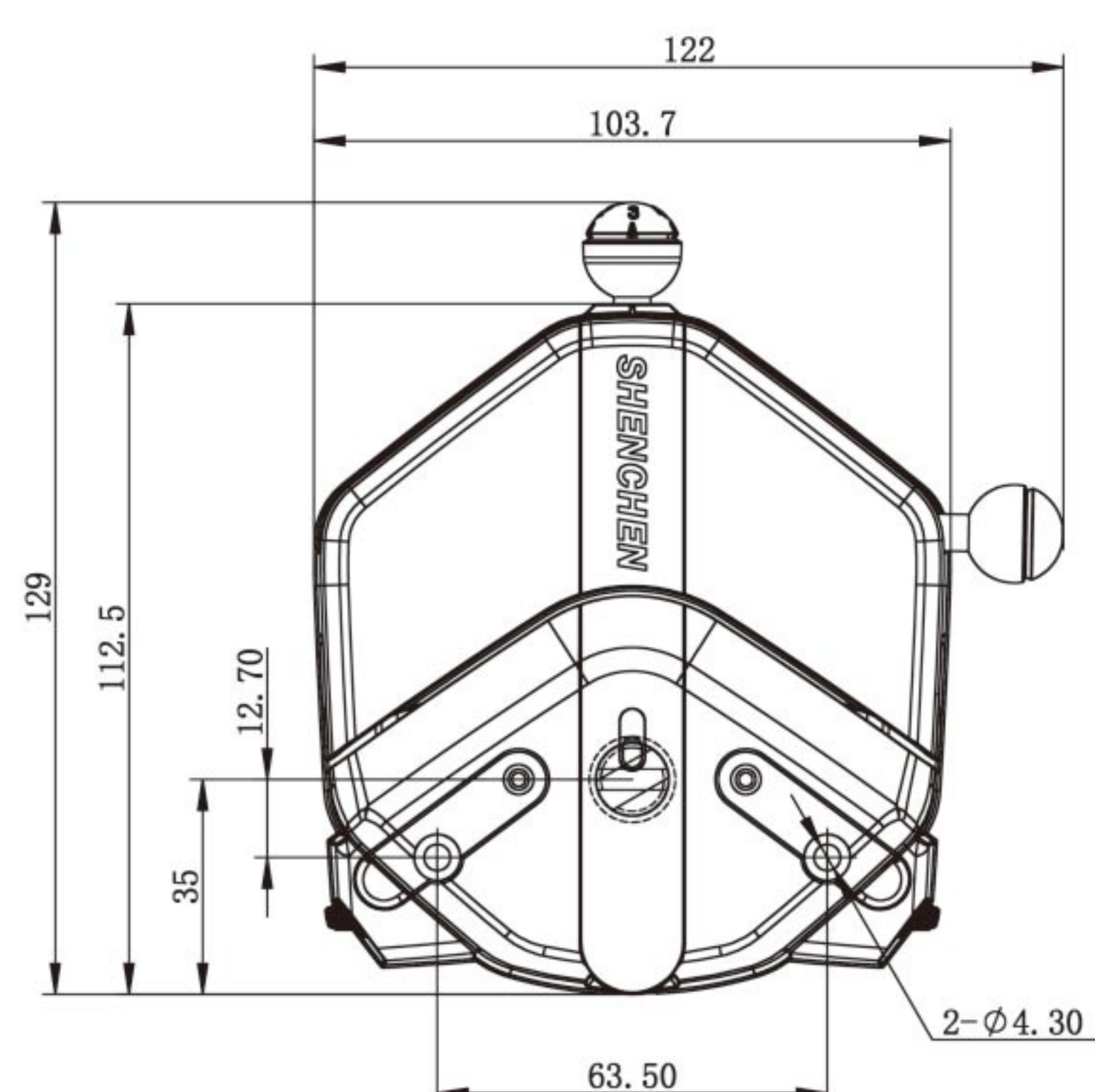
### Product Features

- | The tube clamp linkage mechanism makes it more convenient to install the tube.
  - | The rubbing wheel adjustment mechanism can easily fix different size tube.
  - | The lever assist mechanism makes the operation more labor-saving.
  - | The tube pressure gap fine-tuning mechanism can adjust the pressure, extend the life of the tube and improve the dispensing accuracy.
- Tube tubes can be installed at the same time to realize single pump head with two channels.

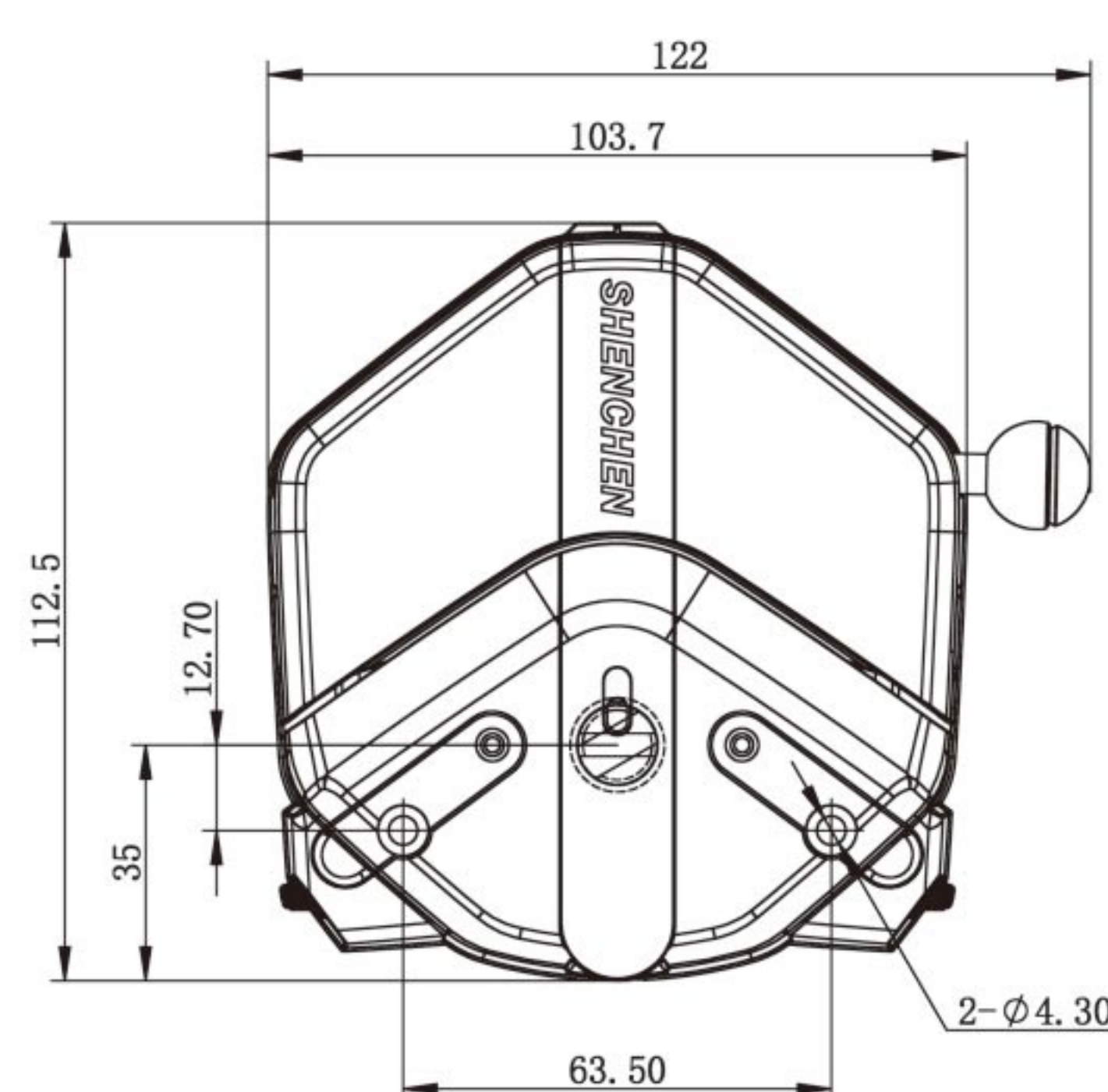
### Typical Application

- | Support COD on-line monitor.
- | Support anorectal therapeutic instrument.
- | Support biofermentation cylinder.

### Dimension Drawing (Unit: mm)



EasyPump Pressure Adjustable

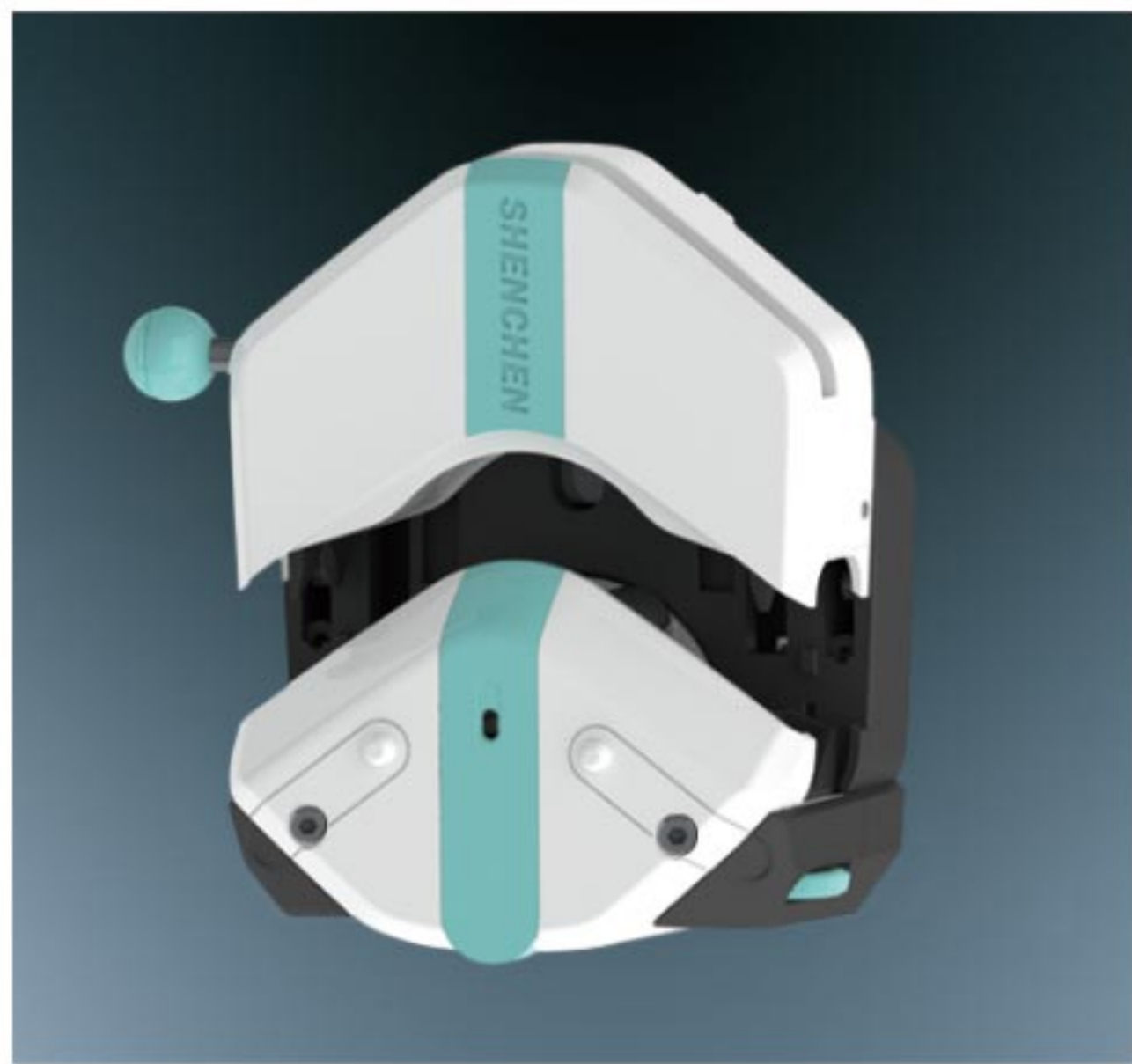


EasyPump Fixed Pressure

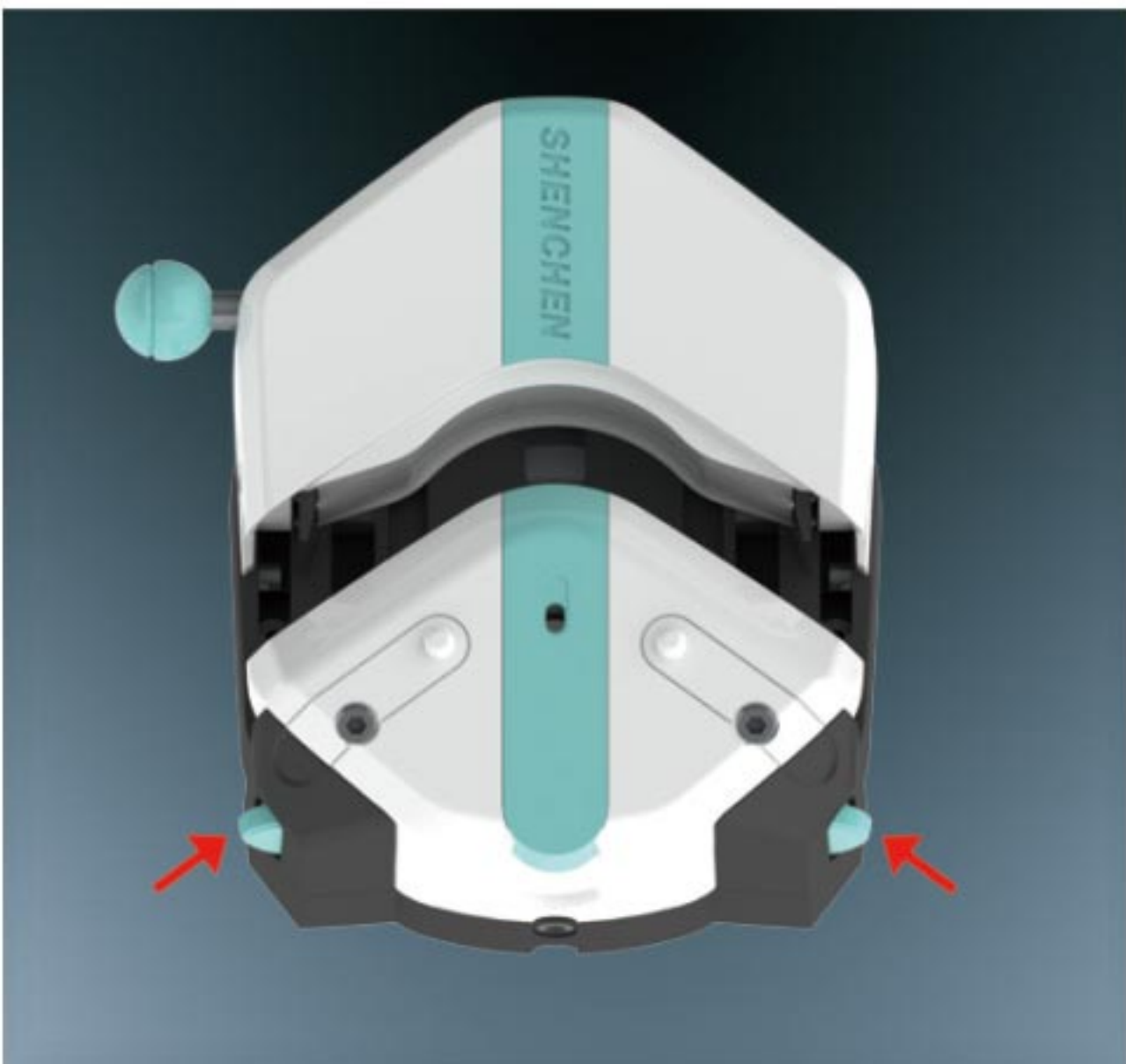




Tubing Installation Procedure



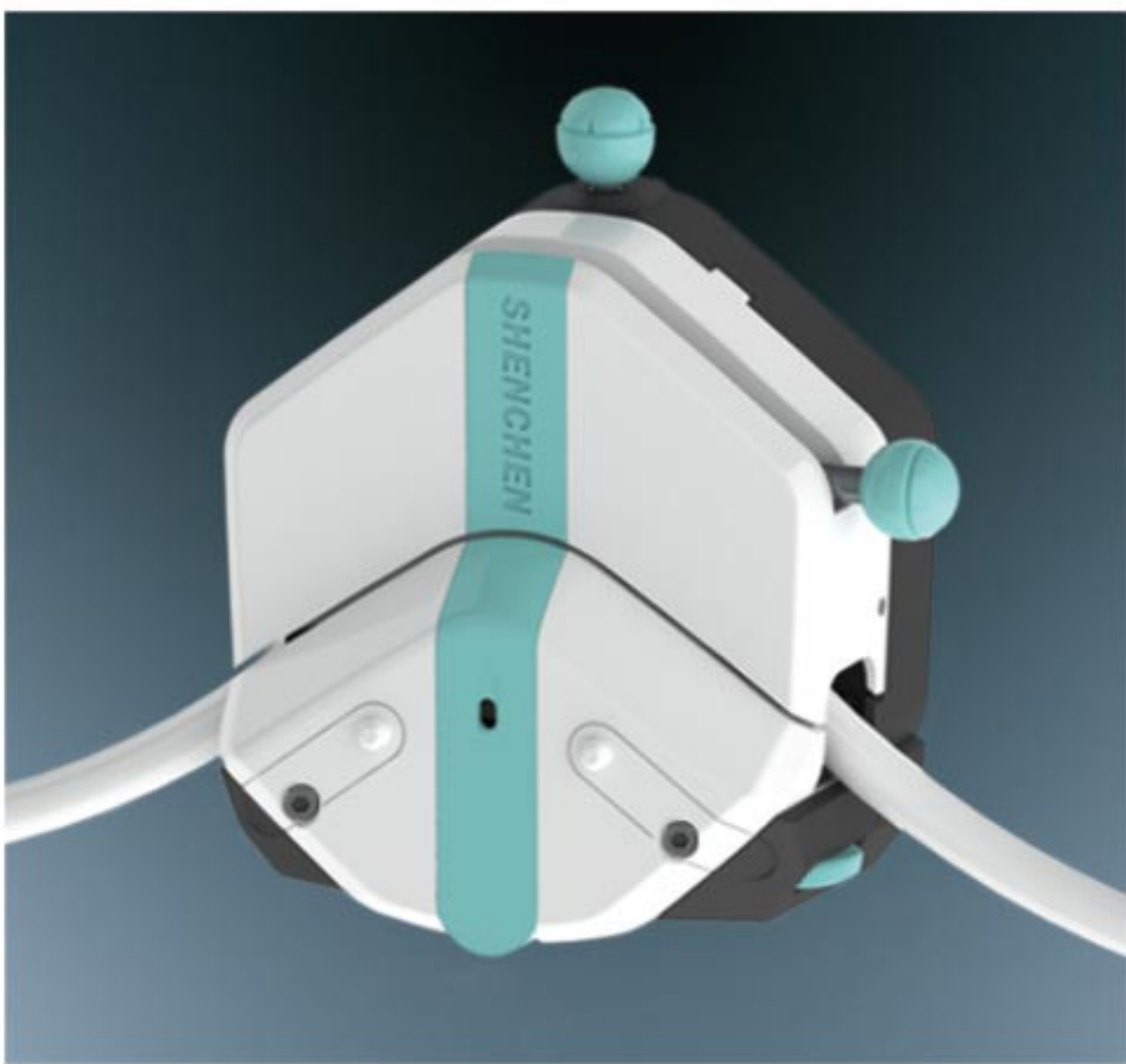
1. Turn the knob anticlockwise 180°, open the upper block.



2. Turn the rubbing wheel to adjust the lower tube clamp position, according to the tubing size.



3. Put the tube between rollers and upper block, tighten up the tubing lightly.



4. Turn the knob clockwise 180°, put the upper block back to original position, fasten the tube.

Experimental conditions: standard atmospheric pressure, room temperature at 20°C, the liquid is pure water, no pressure, no suction and lift.  
Note: Actually, it is affected by many factors such as transmission medium, inlet and outlet pressure, hose material and error, working environment, etc. This data is for reference only.

Technical Specifications							
Pump Head	Tubing	ID×Wall thickness(mm)	mL/r	Flow Rate(mL/min) (0.1-600rpm)	Tubing Max.Pressure(Mpa)		Weight(kg)
					Intermittent	Continuous	
Single Channel EasyPumpI/III	13 <sup>#</sup>	0.8×1.6	0.053	0.0053-32	0.27	0.17	0.6
	14 <sup>#</sup>	1.6×1.6	0.27	0.027-162			
	19 <sup>#</sup>	2.4×1.6	0.55	0.055-330			
	16 <sup>#</sup>	3.1×1.6	0.933	0.093-560			
	25 <sup>#</sup>	4.8×1.6	1.967	0.197-1180	0.24	0.14	
	17 <sup>#</sup>	6.4×1.6	3.333	0.333-2000	0.14	0.10	
	18 <sup>#</sup>	7.9×1.6	4.3	0.430-2580	0.10	0.07	
Single Channel EasyPumpII/IV	15 <sup>#</sup>	4.8×2.4	1.8	0.180-1080	0.27	0.17	
	24 <sup>#</sup>	6.4×2.4	2.733	0.273-1640			
	35 <sup>#</sup>	7.9×2.4	3.833	0.383-2300	0.24	0.14	
	36 <sup>#</sup>	9.6×2.4	5.167	0.517-3100			
Dual Channel EasyPumpV/VI	13 <sup>#</sup>	0.8×1.6	0.053	0.0053-32	0.27	0.17	
	14 <sup>#</sup>	1.6×1.6	0.27	0.027-162			
	19 <sup>#</sup>	2.4×1.6	0.55	0.055-330			
	16 <sup>#</sup>	3.1×1.6	0.933	0.093-560			
	25 <sup>#</sup>	4.8×1.6	1.967	0.197-1180	0.24	0.14	
Pump Head		Single/Dual Channel		Tubing Wall Thickness(mm)		Pressure Adjustable	
EasyPumpI		Single Channel		1.6		Fixed Pressure	
EasyPumpII		Single Channel		2.4		Fixed Pressure	
EasyPumpIII		Single Channel		1.6		Pressure Adjustable	
EasyPumpIV		Single Channel		2.4		Pressure Adjustable	
EasyPumpV		Dual Channel		1.6		Fixed Pressure	
EasyPumpVI		Dual Channel		1.6		Pressure Adjustable	

Other Color Selection(EasyPump-PPS Series)



EasyPump-PPSG(Pressure Adjustable)



EasyPump-PPSG(Fixed Pressure)



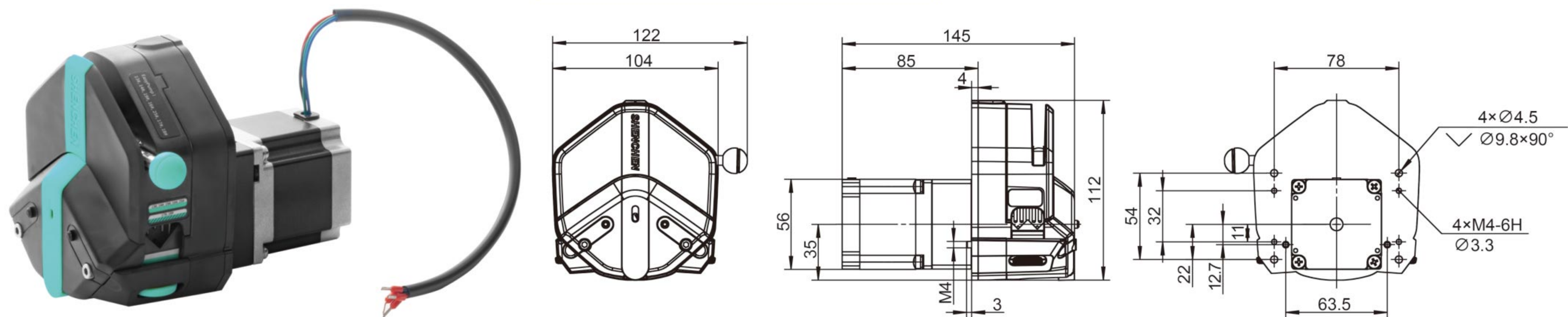


# OEM Product

## Quick Load Pump Head Series EasyPump

### OEM-EYB101

Dimension Drawing(Unit: mm)

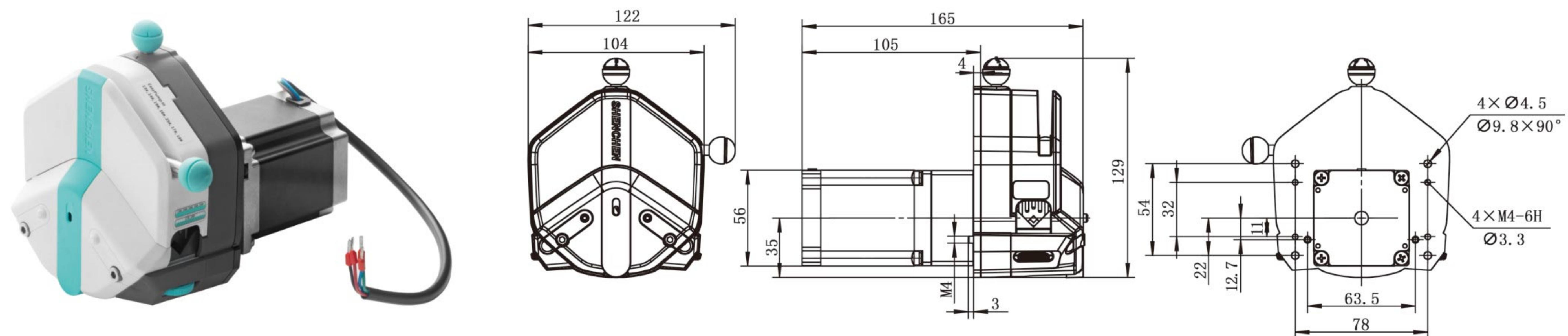


### OEM-EYB101 Technical Specifications

Speed range	0.1-350 rpm	Motor step angle	1.8°
Flow rate range	0.0053-1505mL/min	Motor phase voltage	2.7V
Motor type	57 stepper motor	Motor phase current	3.0A
Motor phase number	2	Working environment	0-40℃, 80%RH

### OEM-EYB201

Dimension Drawing(Unit: mm)

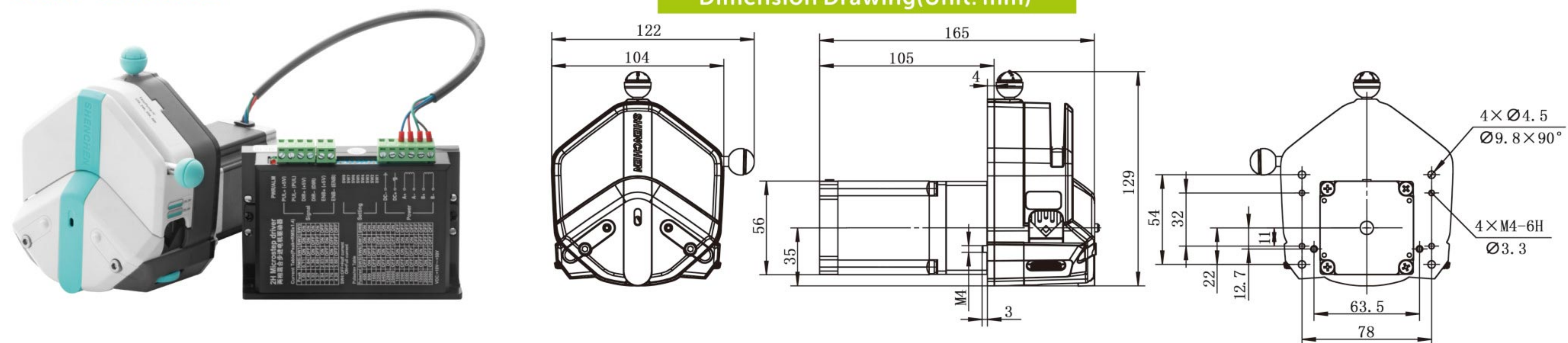


### OEM-EYB201 Technical Specifications

Speed range	0.1-600 rpm	Motor step angle	1.8°
Flow rate range	0.0053-2580mL/min	Motor phase voltage	3.4V
Motor type	57 stepper motor	Motor phase current	3.0A
Motor phase number	2	Working environment	0-40℃, 80%RH

### OEM-EYB202

Dimension Drawing(Unit: mm)



### OEM-EYB202 Technical Specifications

Speed range	0.1-600 rpm	Motor type	57 stepper motor
Flow rate range	0.0053-2580mL/min	Power supply	DC18~50V(recommend36V), ≥80W
Speed control	External input pulse frequency speed control	Logic input voltage	5V
Subdivision settings	4-speed DIP switch setting(default 16 subdivisions)	Working environment	0-40℃, 80%RH
Current setting	3-speed DIP switch setting(default 2.84A)		



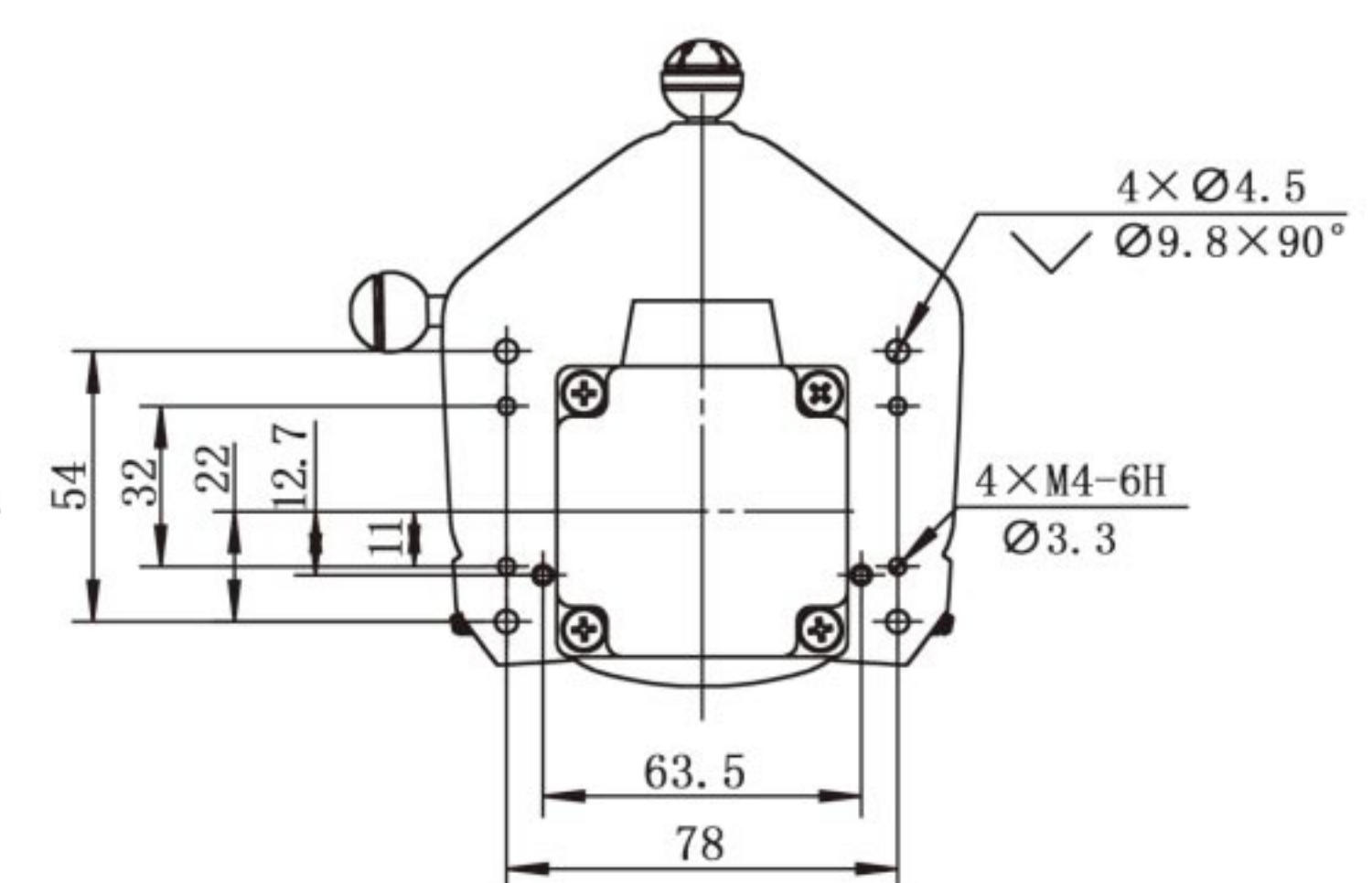
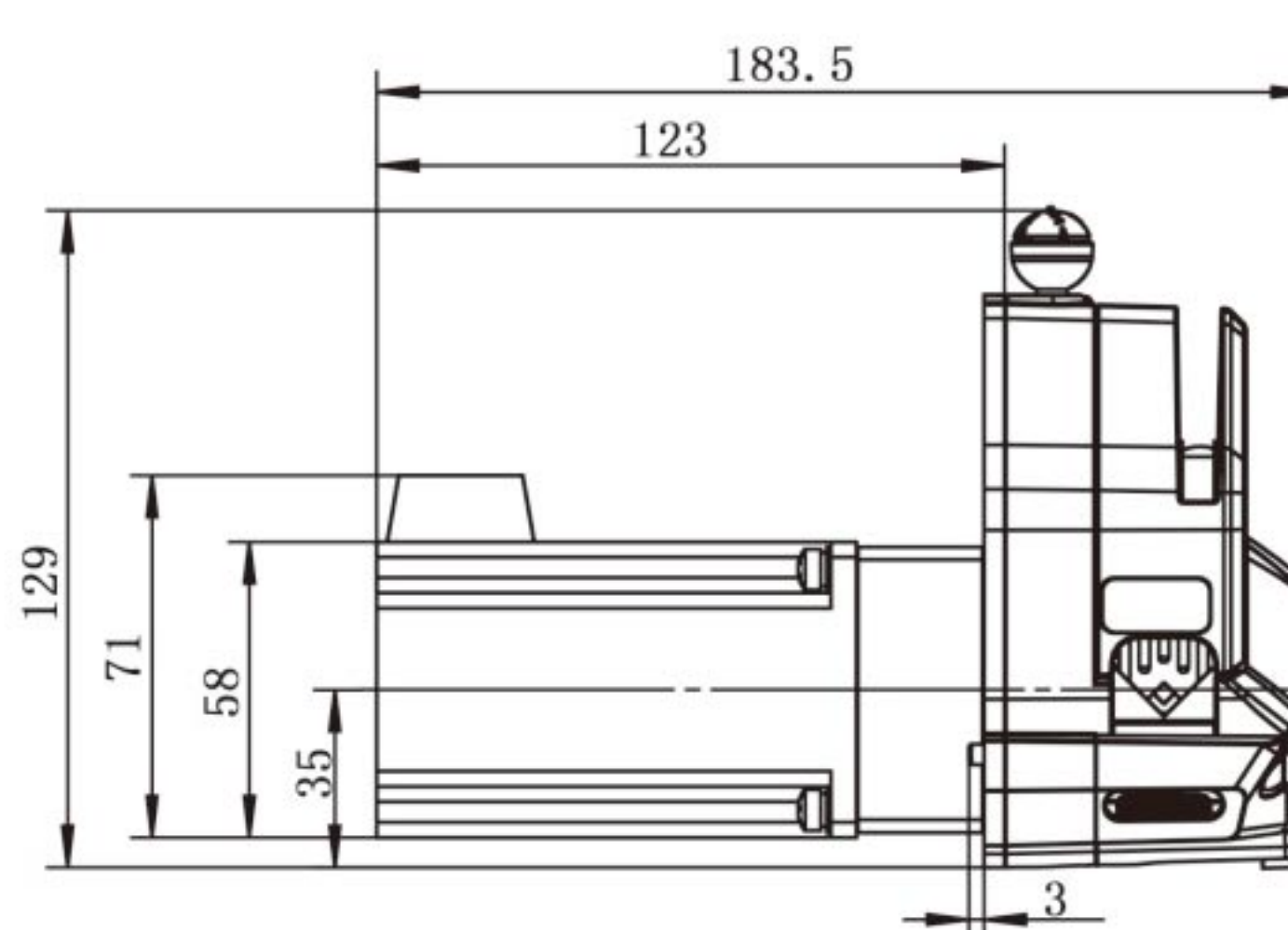
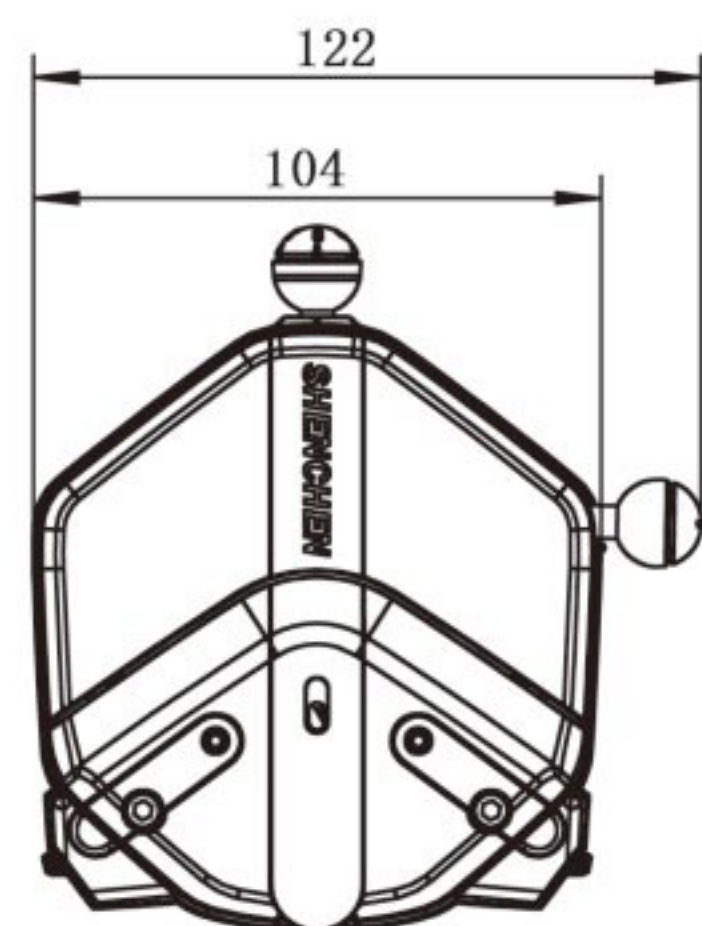


## OEM Product

### Quick Load Pump Head Series EasyPump

#### OEM-EYB301

Dimension Drawing(Unit: mm)

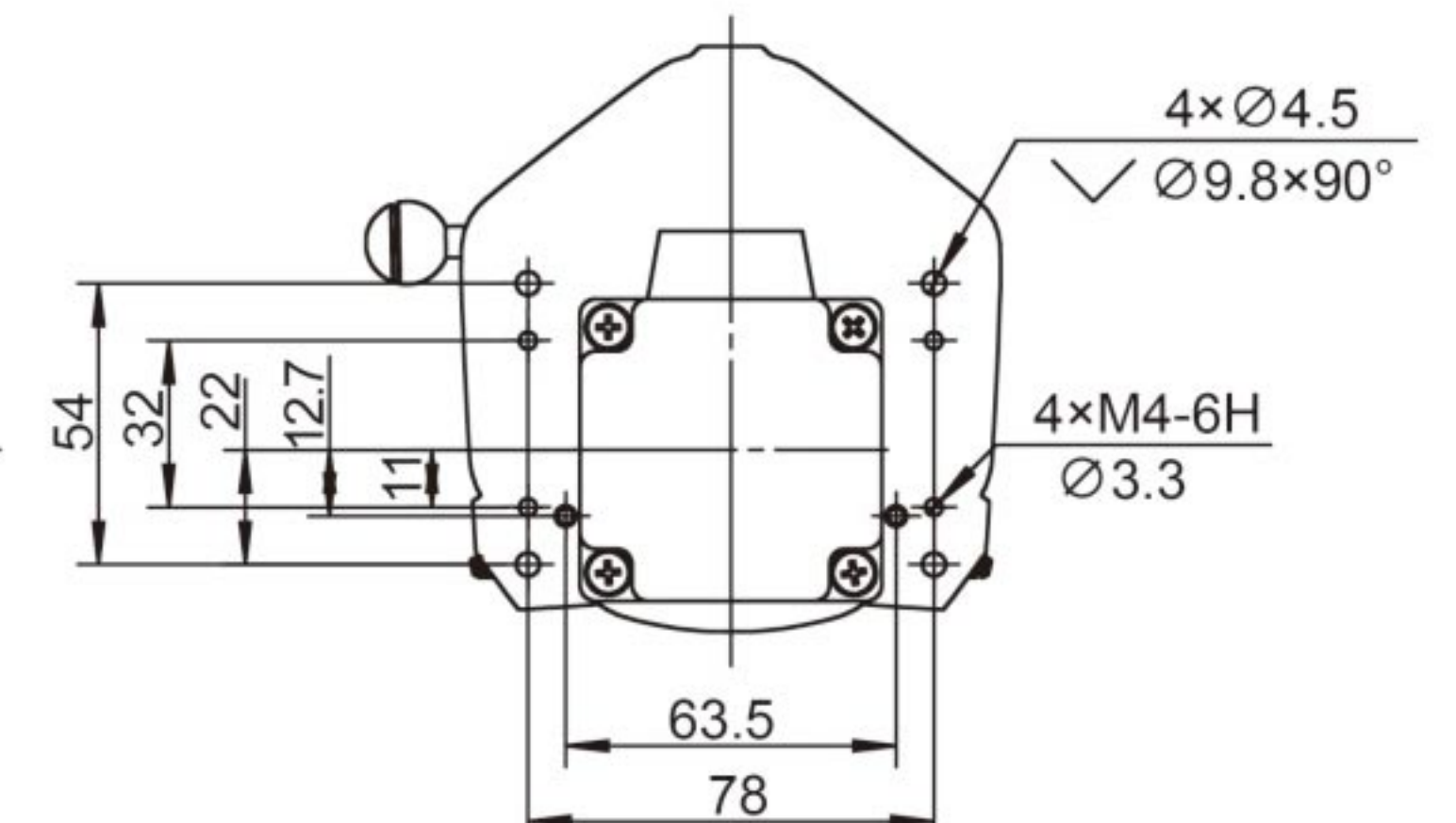
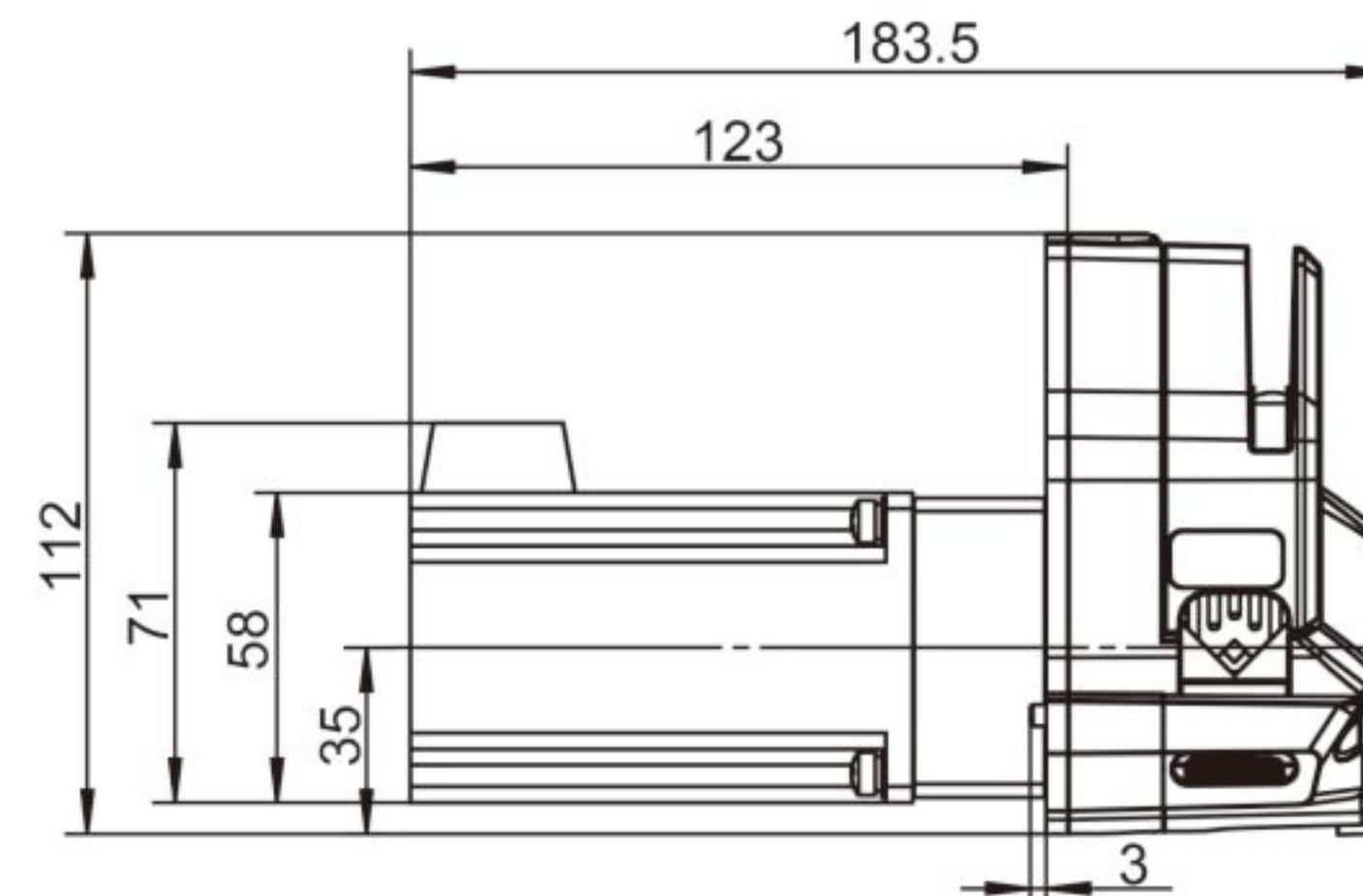
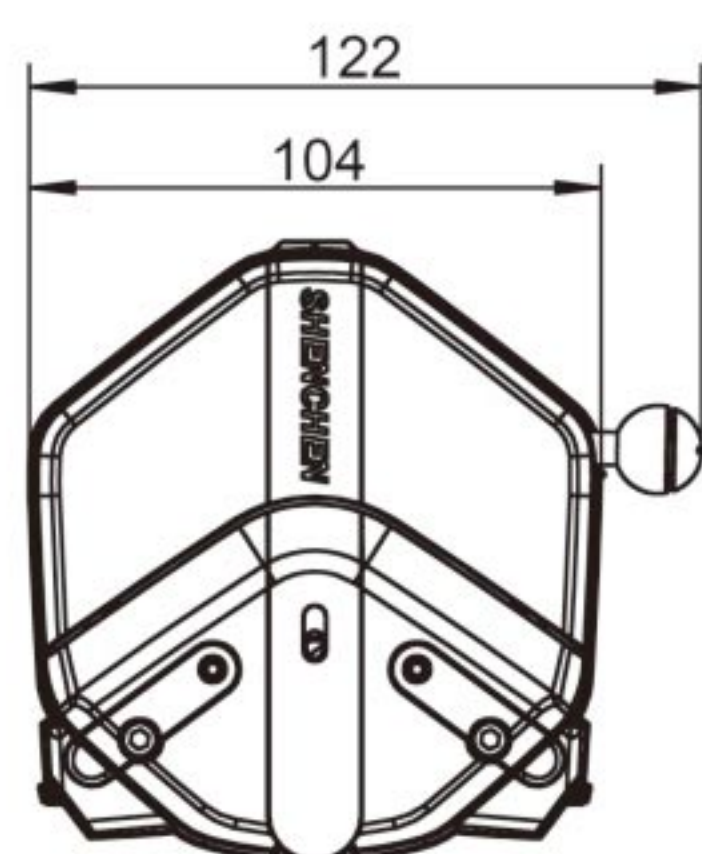


#### OEM-EYB301 Technical Specifications

Speed range	0.1-600 rpm	Motor phase voltage	1.9V
Flow rate range	0.0053-3100mL/min	Motor phase current	5.0A
Motor type	57 Closed-loop stepper motor	Encoder power voltage	DC5V(±10%)
Motor phase number	2	Encoder resolution	1000cpr
Motor step angle	1.8°	Working environment	0-40℃, 80%RH

#### OEM-EYB302

Dimension Drawing(Unit: mm)

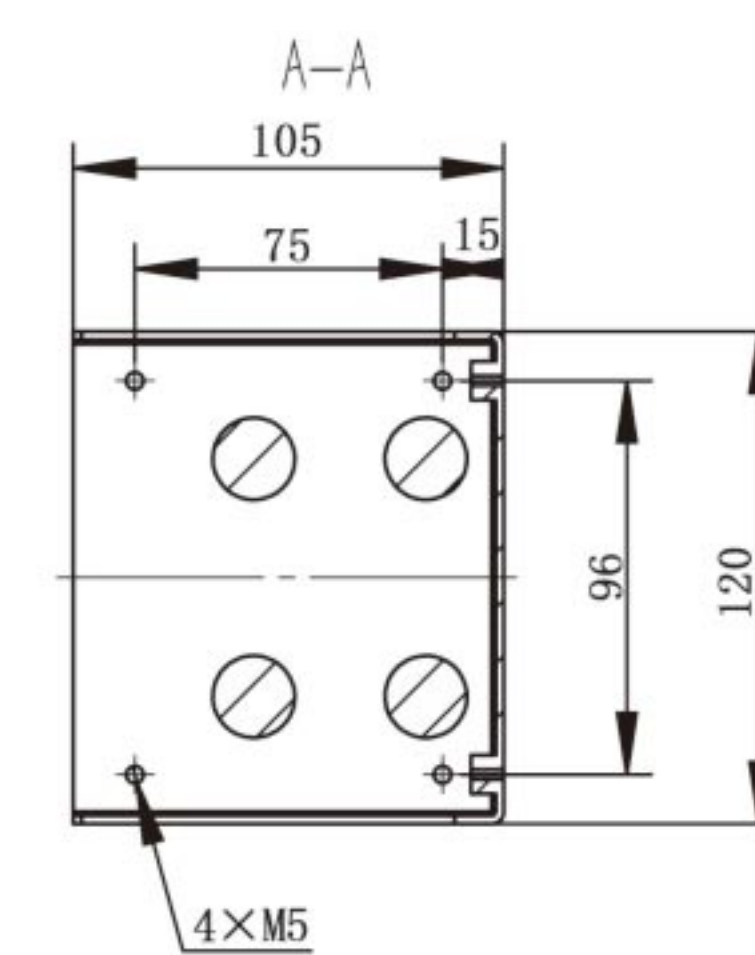
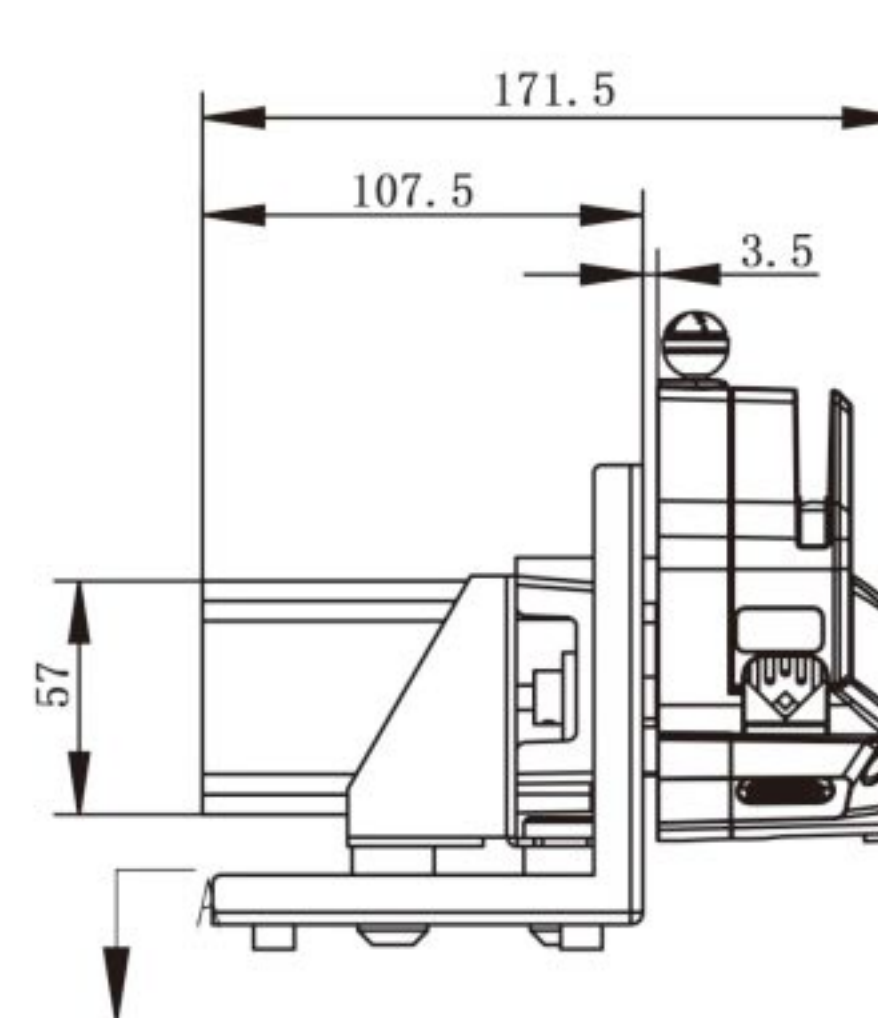
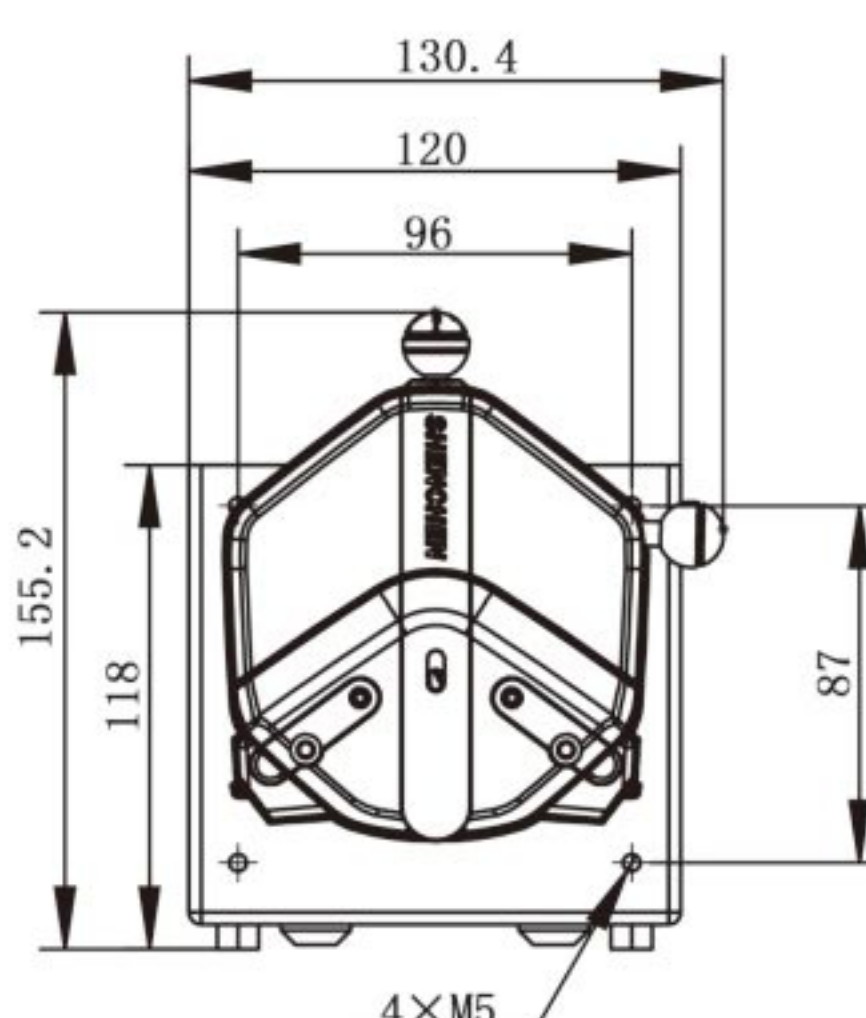


#### OEM-EYB302 Technical Specifications

Speed range	0.1-600 rpm	Motor type	57 Closed-loop stepper motor
Flow rate range	0.0053-3100mL/min	Power supply	DC18 ~ 50V(recommend36V), ≥80W
Speed control	External input pulse frequency speed control	Logic input voltage	5V
Subdivision settings	4-speed DIP switch setting(default 16 subdivisions)	Working environment	0-40℃, 80%RH
Current setting	Adaptive current		

#### OEM-B29/EasyPump

Dimension Drawing(Unit: mm)



#### OEM-B29 Technical Specifications

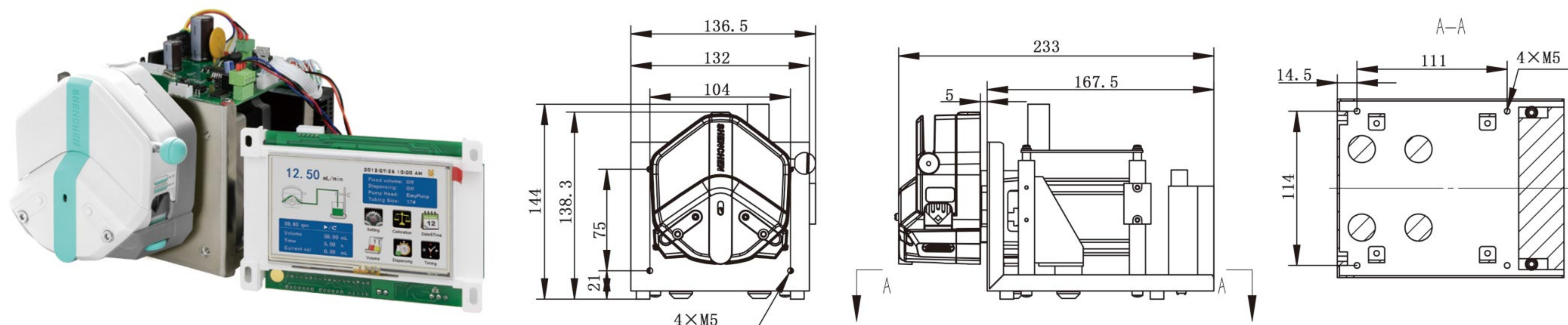
Speed range	0.1-600 rpm	Motor step angle	1.8°
Flow rate range	0.0053-2580mL/min	Motor phase voltage	1.5V
Motor type	57stepper motor	Motor phase current	3.0A
Motor phase number	2	Working environment	0-40℃, 80%RH





## OEM-B242/B243/B244/EasyPump

Dimension Drawing(Unit: mm)

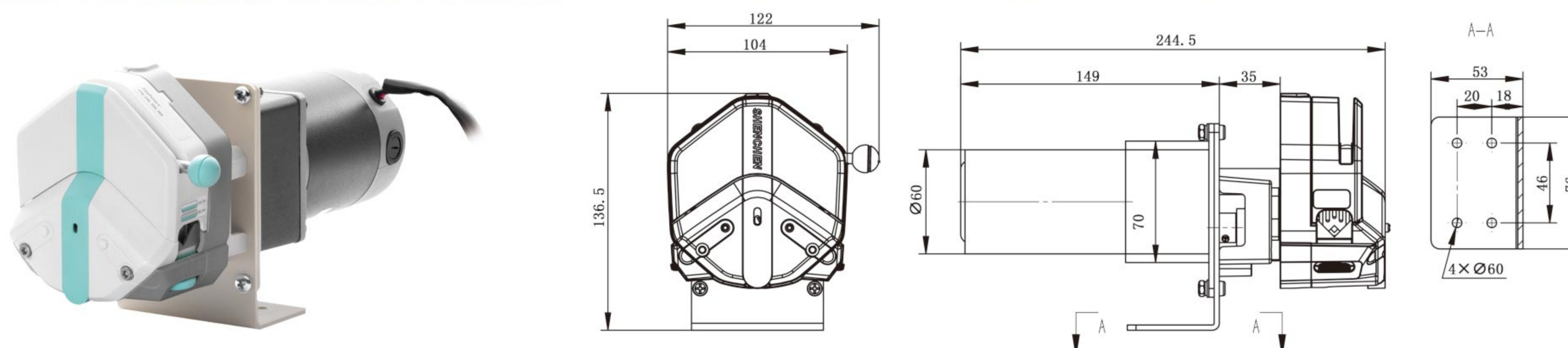


### OEM-B242/B243/B244 Technical Specifications

Motor type	Stepper motor	Function type	OEM-B242, Flow rate type
Display	Industrial grade 4.3" LCD color display		OEM-B243, Dispensing type
Control method	Touch screen and Mechanical keypad		OEM-B244, Multichannel filling type
Speed range	≤600rpm	Working environment	0-40℃, 80%RH
Max.flow rate	2580mL/min		

## OEM-Z216/EasyPump(DC motor)

Dimension Drawing(Unit: mm)

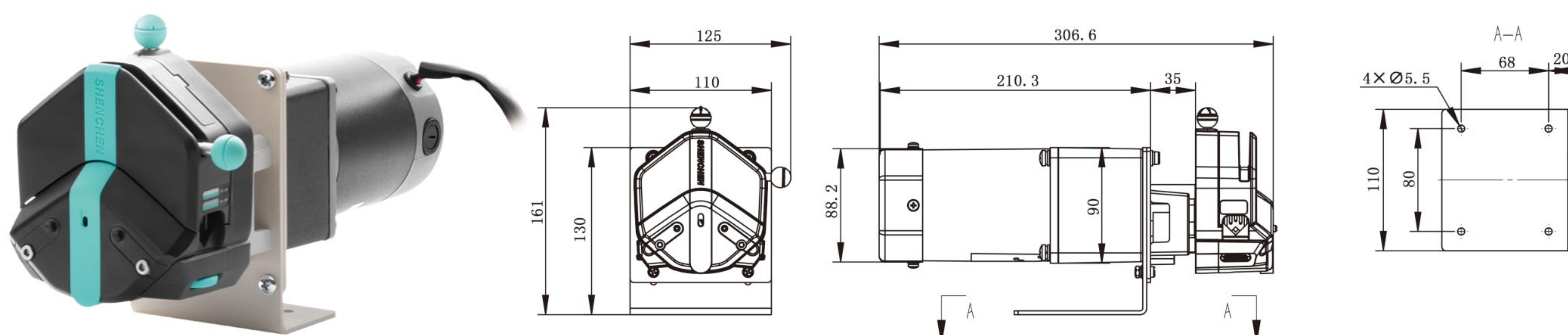


### OEM-Z216 Technical Specifications

Model No.	Motor type	Power supply	Speed(rpm)	Speed error	Working environment
OEM-Z216	DC geared motor	DC24V	450	≤±10%	0-40℃, 80%RH

## OEM-J022/EasyPump(AC motor)

Dimension Drawing(Unit: mm)



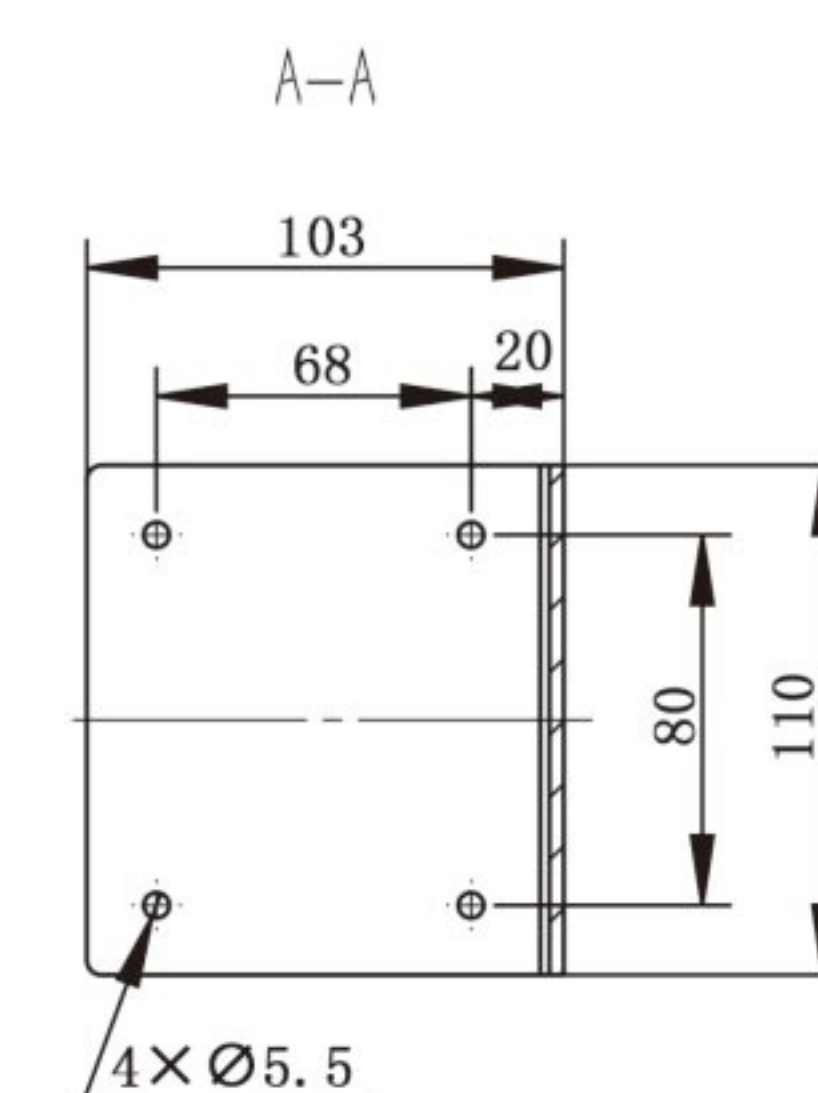
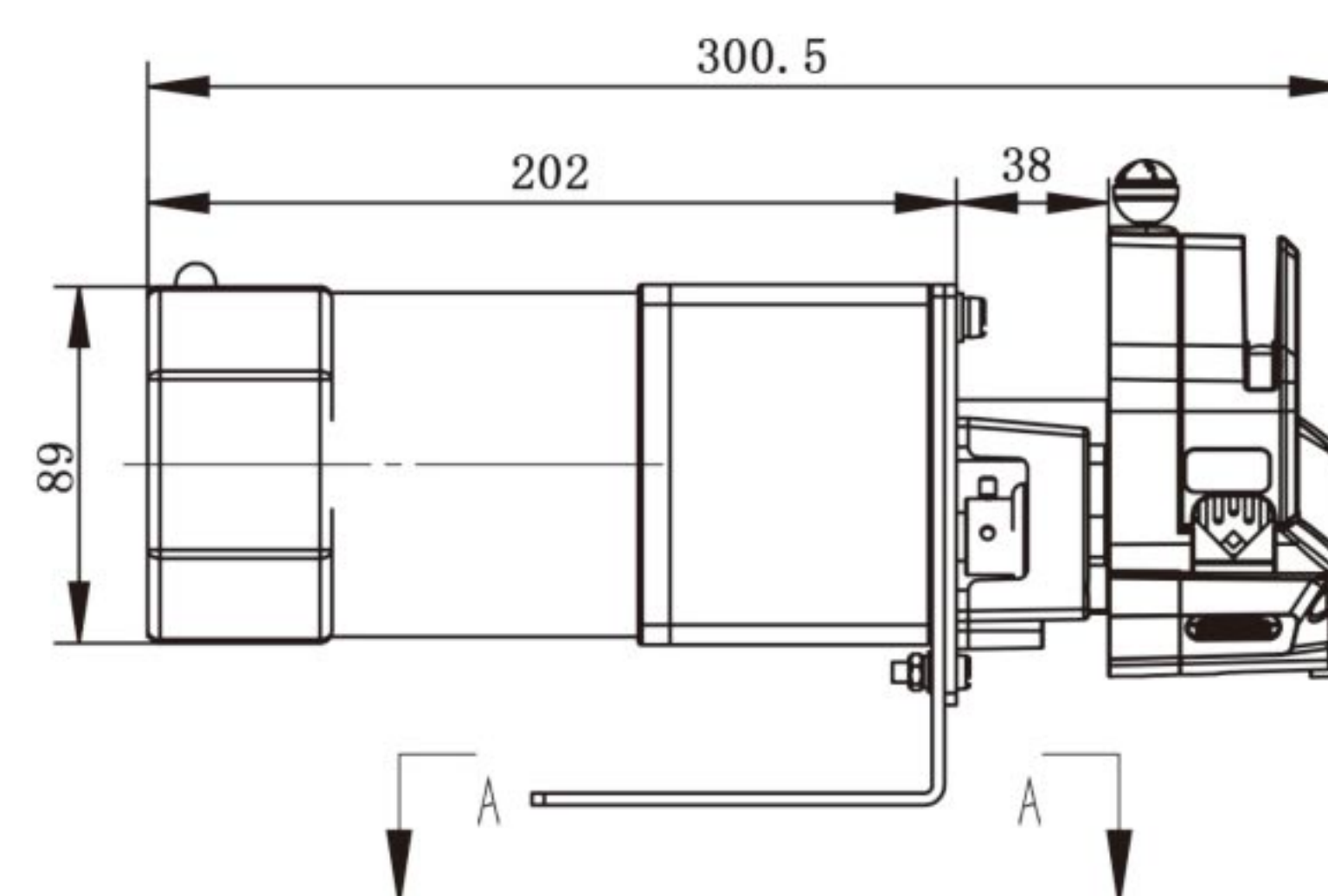
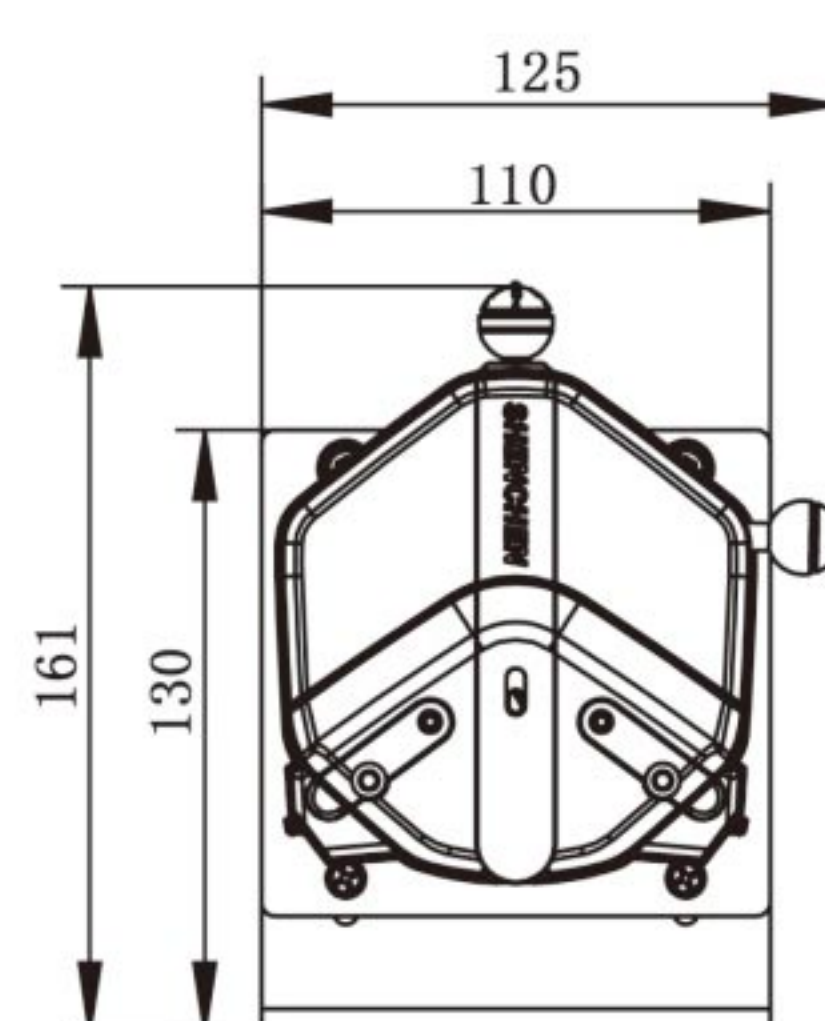
### OEM-J022 Technical Specifications

Model No.	Motor type	Power supply	Speed(rpm)	Speed error	Working environment
OEM-J022	AC geared motor	AC220V/AC110V	430	≤±10%	0-40℃, 80%RH



## OEM-JT12/EasyPump

Dimension Drawing(Unit: mm)



## OEM-JT12 Technical Specifications

Model No.	Motor type	Power supply	Speed(rpm)	Speed error	Working environment
OEM-JT12	AC speed adjustable motor	AC220V/AC110V	43-430	≤±10%	0-40℃, 80%RH

## Quick Load Pump Head

## HandyPump



Single channel



Dual channel

(3/6rollers)

## Product Features

- Flow rate range: 0.0033-365.69mL/min (3 rollers)  
0.0031-190.81mL/min (6 rollers)
- Front knob to open the pump head, save space.
- Automatic tubing retention makes tube loading easy and quick.
- Single and dual-channel head available.
- 5 different sizes tubing to meet different flow rate requirements.

Single channel  
HandyPump01Dual channel  
HandyPump02

## Other Color Selection(HandyPump-PPS Series)

